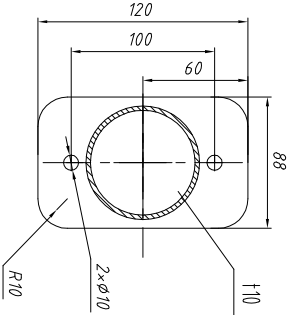
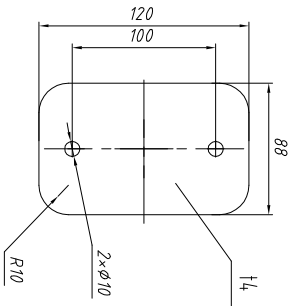


Detail drawing of piece 1
15



Detail drawing of gasket
15



Technical requirement

1. The sharp edge is blunt and chamfered, and the cutting edge is not noted;
2. The weld seam is uniform and continuous, without welding defects, and the height of the unguarded weld leg is equal to the thickness of the thinner part; $\frac{125}{\sqrt{}}$
3. After welding, remove slag and smooth it. Serial number ① adopts standard elbow;
4. The surface painting color is safely color.
5. The gasket must be uniform in thickness, and the material is GB/T5574-2008, model A-05-3-H5-Ts.

①	30531800089	Stamping elbow	2		1.2	2.4	
6	GB/T3274-2017	Supporting steel plate 215	1	Q235B	4.2	4.2	
5	GB/T3274-2017	Supporting steel plate 115	2	Q235B	5.8	11.6	
4	GB/T13793-2016	Welded steel pipe support φ163	1	Q235B	3	3	
3	GB/T13793-2016	Welded steel pipe support φ163	1	Q235B	8.6	8.6	
2	GB/T13793-2016	Welded steel pipe support φ163	2	Q235B	0.831	6.6	
1	GB/T3274-2017	Fixed plate 110	4	Q235B	0.833	3.2	
No.	Code	Port Name	Qty	Material	Sign	Weight	Remark
	Code Number						

MESMAC CO., LTD				Unpacking rack			
Weldment							
Work Number	Working file No.	Signature	Date	Work	Weight	Scale	
Designer	Standard						
Checker	Approver						
Verifier	Overseer			A	34.78	15	
Processor	View			Total No.	No.		